

Flor del Carmelo

Betsaida

Clarinet in B \flat

Violin I

Violin II

Viola

Cello

8

A

B \flat Cl.

Vln. I

Vln. II

Vla.

Vc.

8

Flor del Carmelo

2
18

B \flat Cl.

Vln. I

Vln. II

Vla.

Vc.

This musical score block covers measures 18 through 26. The instruments are B \flat Clarinet, Violin I, Violin II, Viola, and Violoncello. Measures 18-26 are marked with a '2' and '18' at the beginning. The B \flat Cl., Vln. I, and Vln. II parts consist of whole rests. The Viola part begins with a half note G \sharp in measure 18, followed by half notes A \sharp and B \sharp in measures 19 and 20, then whole rests until measure 23, where it begins a descending eighth-note scale: G \sharp , F \sharp , E \sharp , D \sharp , C \sharp , B \sharp , A \sharp , G \sharp . The Violoncello part begins with a half note G \sharp in measure 18, followed by half notes A \sharp and B \sharp in measures 19 and 20, then a half note C \sharp in measure 21, followed by a half note D \sharp in measure 22, then a half note E \sharp in measure 23, followed by a half note F \sharp in measure 24, then a half note G \sharp in measure 25, and finally a half note A \sharp in measure 26.

B

27

B \flat Cl.

Vln. I

Vln. II

Vla.

Vc.

This musical score block covers measures 27 through 34. A rehearsal mark 'B' is placed above measure 27. The instruments are B \flat Clarinet, Violin I, Violin II, Viola, and Violoncello. Measures 27-34 are marked with a '27' at the beginning. The B \flat Cl., Vln. I, and Vln. II parts consist of whole rests. The Viola part begins with a half note G \sharp in measure 27, followed by half notes A \sharp and B \sharp in measures 28 and 29, then whole rests until measure 32, where it begins a descending eighth-note scale: G \sharp , F \sharp , E \sharp , D \sharp , C \sharp , B \sharp , A \sharp , G \sharp . The Violoncello part begins with a half note G \sharp in measure 27, followed by half notes A \sharp and B \sharp in measures 28 and 29, then a half note C \sharp in measure 30, followed by a half note D \sharp in measure 31, then a half note E \sharp in measure 32, followed by a half note F \sharp in measure 33, then a half note G \sharp in measure 34, and finally a half note A \sharp in measure 35.

35

B \flat Cl.

Vln. I

Vln. II

Vla.

Vc.

43

B \flat Cl.

Vln. I

Vln. II

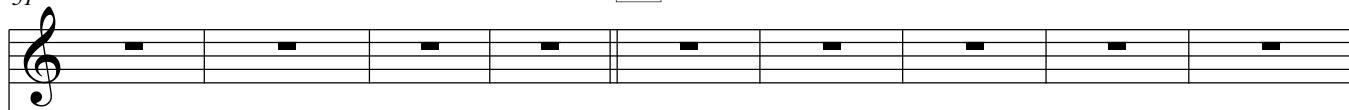
Vla.

Vc.

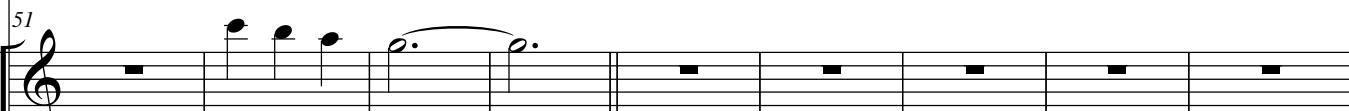
Flor del Carmelo

4
51

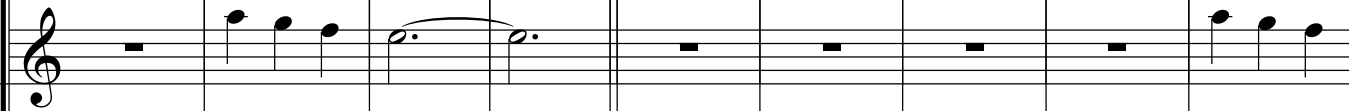
B \flat Cl.



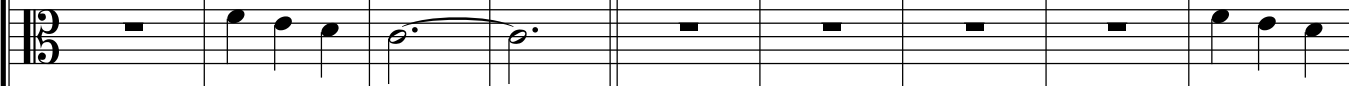
Vln. I



Vln. II



Vla.

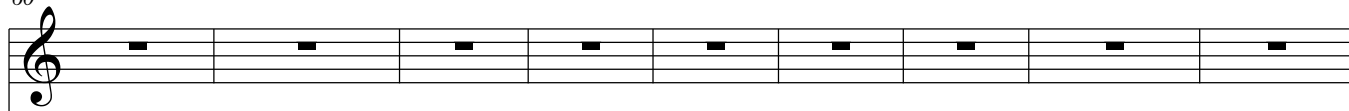


Vc.

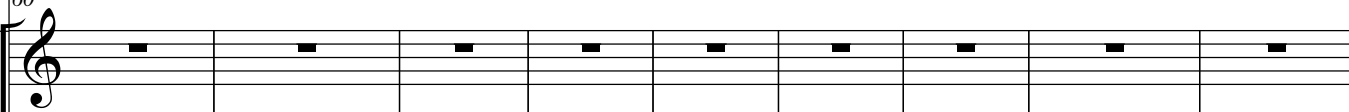


60

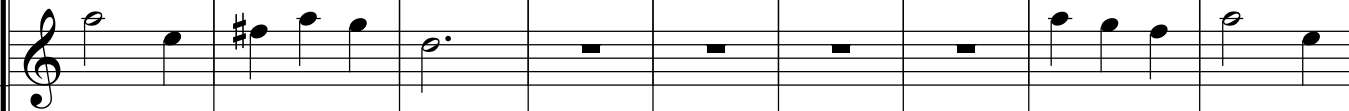
B \flat Cl.



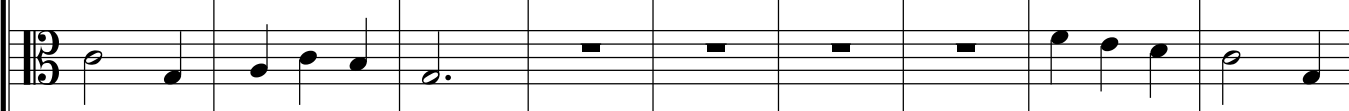
Vln. I



Vln. II



Vla.



Vc.



E

Flor del Carmelo

5

69

B \flat Cl.

Vln. I

Vln. II

Vla.

Vc.

F

78

rit.

B \flat Cl.

Vln. I

Vln. II

Vla.

Vc.

Flor del Carmelo

6
87

B \flat Cl.

Vln. I

Vln. II

Vla.

Vc.

G

96

B \flat Cl.

Vln. I

Vln. II

Vla.

Vc.

Flor del Carmelo

8
122

B \flat Cl.

Vln. I

Vln. II

Vla.

Vc.

J

B \flat Cl.

Vln. I

Vln. II

Vla.

Vc.

130

130

Flor del Carmelo

K

9

137

B \flat Cl.

Vln. I

Vln. II

Vla.

Vc.

This system contains measures 137 through 142. The key signature is two sharps (F# and C#). The B \flat Clarinet part starts with a treble clef and a key signature change to two sharps at measure 141. The Violin I and II parts, Viola, and Violoncello parts all start with a treble clef and a key signature change to two sharps at measure 141. The music features a variety of note values including quarter, eighth, and sixteenth notes, as well as rests and ties.

143

B \flat Cl.

Vln. I

Vln. II

Vla.

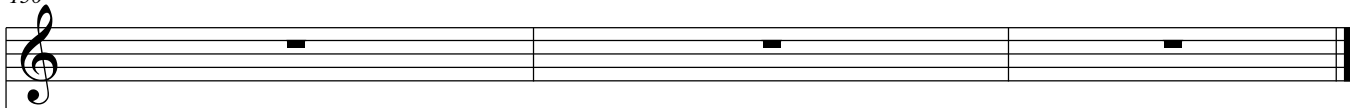
Vc.

This system contains measures 143 through 148. The key signature is two sharps (F# and C#). The B \flat Clarinet part starts with a treble clef and a key signature change to two sharps at measure 143. The Violin I and II parts, Viola, and Violoncello parts all start with a treble clef and a key signature change to two sharps at measure 143. The music continues with various note values and rests, maintaining the melodic and harmonic themes established in the previous system.

Flor del Carmelo

10
150

B \flat Cl.



Vln. I



Vln. II



Vla.



Vc.

